

Pixxaro[®] EC

Arylex™ active

HERBICIDE

Mixing and Handling Guide



Pixxaro[®] EC herbicide with Arylex™ active takes broadleaf weed control to the next level for wheat growers. With two leading active ingredients, growers can expect exceptional control of tough weeds, including kochia, one of the most troublesome weeds in wheat. Arylex active is a new active ingredient developed by Corteva Agriscience™. Combining Arylex active with our trusted molecule, fluroxypyr, delivers outstanding control of wild buckwheat, marestail, redroot pigweed, henbit and common lambsquarter. Pixxaro EC brings an elevated fluroxypyr load for tough weeds. It is an excellent tank-mix partner and provides rotational flexibility.

Formulation

Pixxaro EC is an Emulsifiable Concentrates (EC). It contains fluroxypyr and Arylex. All active ingredients of Pixxaro EC are dissolved in the solvent and the concentrate should be a brown/orange transparent solution.

Advantages of EC Formulations

- Easy to measure and disperse in the spray mixture
- Minimum agitation required
- Excellent product shelf life stability
- High concentration of active ingredient content

Standard Tank-Mixing Best Practices

Proper product mixing is important to ensure uniform application and effective weed control. Please review product labels before mixing any products. Pixxaro EC has been tested with a wide range of products for physical tank-mix compatibility. If you need any further information or specific questions on tank-mix partners, please contact your local Corteva Agriscience territory manager. **A simple jar test before mixing products in a sprayer will help to determine the compatibility of the desired tank mixture if compatibility of the two products is uncertain.**

Appearance and Emulsion After Pouring Pixxaro EC in Water



Figure 1. Pixxaro EC

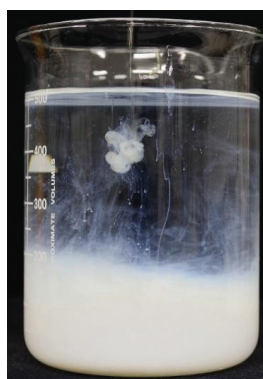


Figure 2: Adding Pixxaro EC in water without agitation



Figure 3: Emulsion of Pixxaro EC in water after gentle agitation

Pixxaro EC (figure 1) rapidly forms emulsion when added to water without agitation (figure 2). Mild agitation is required to form a stable and uniform emulsion (figure 3). Unused Pixxaro EC should be stored in its original package with the cap tightly closed. Pixxaro EC should remain free-flowing in the package during storage.

Tank-Mix Recommendations

1. Fill the spray tank to at least 1/2 full or more with clean water before addition of the first product. **Never add concentrated products to an empty tank.** Start the agitation.
2. Add required amount of:
 - A. Products in following order:
 - 1) Water Dispersible Granules (WG)
 - 2) Wettable Powders (WP)
 - 3) Suspension Concentrates (SC)
 - 4) Pixxaro EC (or other Emulsifiable Concentrates)
 - 5) Soluble Liquid
 - 6) Adjuvant when you tank-mix with other products. Allow 2-3 minutes between products to ensure complete dispersion of the product.
3. Maintain agitation and finish filling the spray tank.

Notes:

- Maintain agitation throughout Pixxaro EC application. Apply mixture immediately after it is prepared.
- Do not prepare Pixxaro EC tank mixtures one day prior to application, and do not allow the tank mix to sit overnight in tank.
- When the application is complete, completely drain and flush the spray booms at the end of the spray day. Leaving tank mixture in the tank or booms overnight can create a condition which makes cleaning the equipment very difficult.
- For winter cereals, when liquid fertilizer is used as a carrier for Pixxaro EC applications, the spray solution should not exceed 30 lb. of actual nitrogen per acre, and no adjuvant is required. Temporary crop injury (e.g., foliar leaf burn, yellowing or reduced growth) may result when liquid fertilizer is used as the spray carrier. Do not foliar apply liquid fertilizer to spring wheat. A maximum of 50% of the solution can be the foliar nitrogen.

Spray Tank and Equipment Cleaning Recommendations

After making Pixxaro EC herbicide application, the entire spray system, including its tank, should be completely and immediately drained. A complete cleaning using a triple-rinse procedure is required before using the sprayer for other crops. General procedure for the triple-rinse includes:

1. Rinse down inside of the tank and fill the tank with at least 10% clean water, agitate for 10 minutes, and then flush water through the booms and hoses. Drain the whole system.
2. Fill half of the spray tank with clean water, add a surfactant-based tank cleaning agent at a label instructed use rate (if available) and start the circulation of cleaning solution while filling the tank to the full level. Circulate/agitate the cleaning solution throughout the application system for at least 10 - 20 minutes. Drain the entire system after circulation/agitation. Remove filters and nozzles and clean separately.
3. If spray equipment will be used for pesticide application to crops sensitive to Pixxaro EC, repeat steps 1 and 2 above.
4. Fill the tank with at least 10% clean water, agitate for 10 minutes, and then flush water through the booms and hoses. Drain the whole system.

Note: Lack of a complete cleaning of sprayer may cause crop injury in applications following Pixxaro EC herbicide where active ingredients are trapped in equipment due to insufficient cleaning.

Visit us at [corteva.us](https://www.corteva.us)

®/™Trademarks of Corteva Agriscience and its affiliated companies.

This reference guide is not intended as a substitute for the product label for the product(s) referenced herein. Product labels for the above product(s) contain important precautions, directions for use, and product warranty and liability limitations, which must be read before using the product(s).

Applicators must be in possession of the product label(s) at the time of application. Always read and follow all label direction and precautions for use when using any pesticide alone or in tank-mix combinations. Pixxaro EC is not registered for sale or use in all states. Contact your state pesticide regulatory agency to determine if a product is registered for sale or use in your state. Always read and follow label directions. ©2022 Corteva. CA01-445-020 COR REV (02/22)